



# ***Service Bulletin*** SB 2X-71-10 R1

Issued: 08 Oct 2004  
Revised: 24 May 2007

Model SR20

## **ATA 71-70: Engine Drains Oil Breather Line Insulation Sleeve Installation**

### **COMPLIANCE**

**Mandatory:** Accomplish this Service Bulletin within 100 Flight Hours or within the next six calendar months, whichever occurs first. Compliance time begins upon receipt of this Service Bulletin.

This Service Bulletin was revised to change compliance to mandatory and update warranty information.

### **EFFECTIVITY**

Cirrus Design SR20 serial numbers SR20-1005 thru SR20-1773 and/or SR20-1005 and subsequent after installation of Winterization Kit Service Bulletin SB 2X-71-04 Revision 4 or prior.

### **APPROVAL**

FAA approval has been obtained on all technical data in this Service Bulletin that affects type design.

### **PURPOSE**

During extremely cold weather conditions, inadequate preheating of the engine may cause moisture in the oil breather line to freeze which could result in high engine oil pressure, improper engine venting, and possible loss of engine oil. To correct this condition, an insulation sleeve may be installed over the oil breather line.

### **DESCRIPTION**

This Service Bulletin contains instructions for installing the oil breather line insulation sleeve.

### **WARRANTY INFORMATION**

For aircraft under warranty at the issue date of this Service Bulletin, Cirrus Design will cover all parts and labor costs for this Service Bulletin if the work is accomplished within the Compliance time period and the work is performed at an authorized Cirrus Design Service Center.

### **MANPOWER REQUIREMENTS**

0.5 manhour.

### **OTHER PUBLICATIONS AFFECTED**

SR20 Illustrated Parts Catalog (p/n 12138-001)

SR22 Illustrated Parts Catalog (p/n 13774-001)

SR20 Airplane Maintenance Manual (p/n 12137-001)

SR22 Airplane Maintenance Manual (p/n 13773-001)

### **Cirrus Design Corporation**

4515 Taylor Circle  
Duluth, Minnesota 55811  
PH (218) 727-2737

**SB 2X-71-10 R1**  
**1 of 4**

## WEIGHT AND BALANCE

N/A

## MATERIAL INFORMATION

The following parts are required to comply with this Service Bulletin. Parts can be obtained from Cirrus Design Spare Part Sales or an authorized Cirrus Design Service Center.

Order kit 70092-001 to obtain the following parts.

Item No.	Description	P/N or Spec.	Supplier	Quantity
1	Insulation Sleeve	17092-001	Cirrus Design	1
2	Adel Clamp	MS21919WDG24	Cirrus Design	1
3	Service Bulletin	SB 2X-71-10 R1	Cirrus Design	1

## ACCOMPLISHMENT INSTRUCTIONS

- A. Remove key from ignition.
- B. Set BAT 1, BAT 2, and AVIONICS switches to OFF positions.
- C. Pull ESSENTIAL and NON-ESSENTIAL AVIONICS circuit breakers.
- D. Remove engine cowling. (Refer to AMM 71-10)
- E. Disconnect battery. (Refer to AMM 24-30)
- F. Install insulation sleeve. (See Figure 01)
  1. Loosen and remove hose clamp securing forward oil breather line to elbow fitting on top forward side of engine.
  2. Remove oil breather line from elbow fitting.
  3. Remove bolt, washer, and nut securing adel clamp for oil breather line to adel clamp on engine. Retain attaching parts and discard adel clamp used for oil breather line.

**CAUTION:** Do not secure either end of insulation sleeve with hose clamp.

Install sleeve with modified end positioned at forward end of oil breather line.

4. Slide insulation sleeve (17092-001) over oil breather line until end of insulation sleeve is  $0.5 \pm 0.5$  inch ( $1.27 \pm 1.27$  cm) from aft LH baffle.
5. Position adel clamp (MS21919WDG24) over oil breather line and insulation sleeve.
6. Install existing bolt, washer, and nut to secure adel clamp for oil breather line and insulation sleeve to existing adel clamp on engine.
7. Route oil breather line and insulation sleeve forward to elbow fitting.

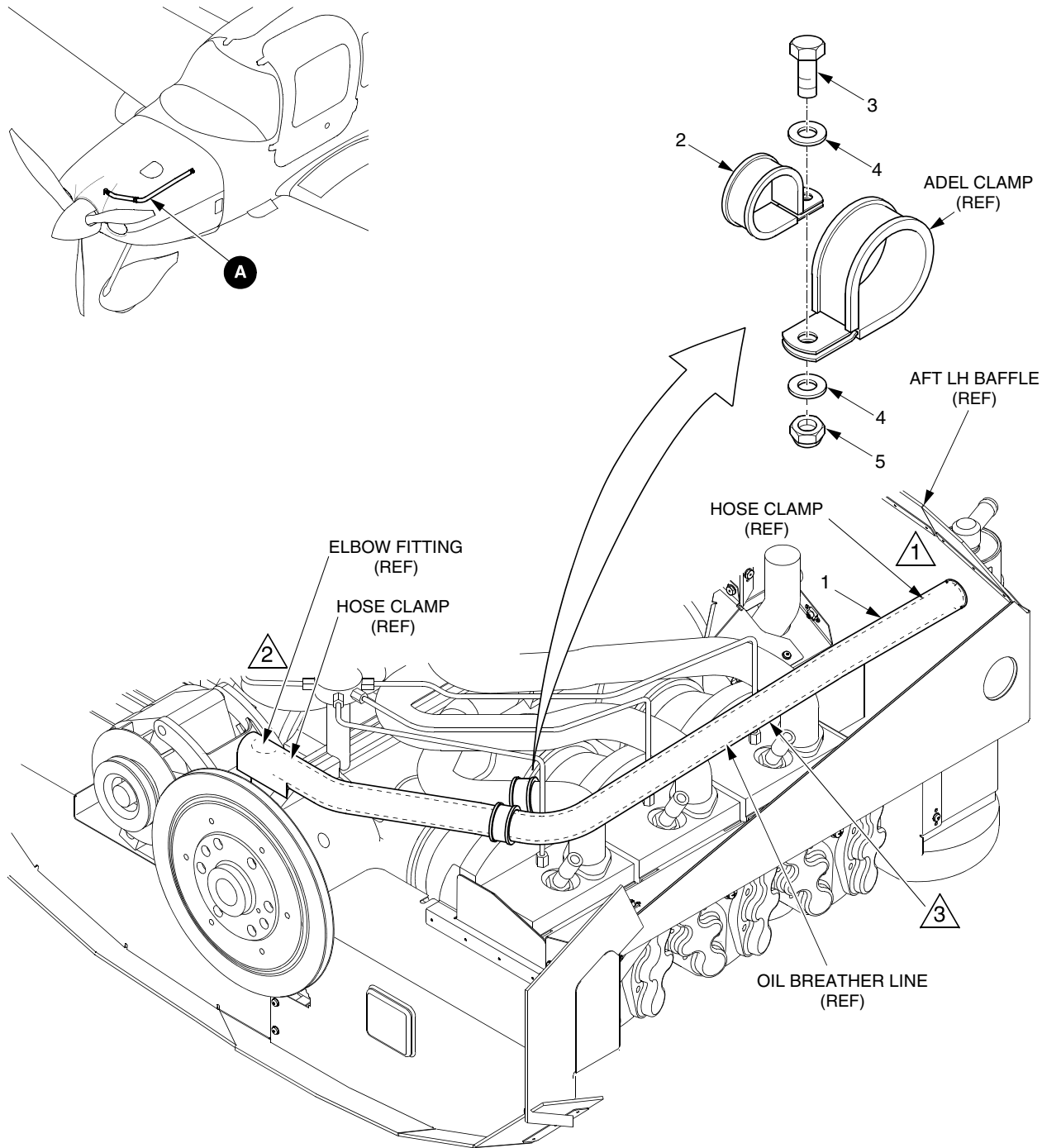
**Note:** Trim aft end of insulation sleeve length if excess interferes with installation of oil breather line to elbow fitting.

Verify no low points exist in oil breather line.

8. Install and secure forward end of oil breather line to elbow fitting with existing hose clamp.
9. Slide modified end of insulation sleeve over end of oil breather line and hose clamp at elbow fitting.



- G. Connect battery. (Refer to AMM 24-30)
- H. Install engine cowling. (Refer to AMM 71-10)
- I. Complete airplane records by noting compliance with SB 2X-71-10 R1 in Aircraft Logbook.



**NOTE**

- 1 Slide insulation sleeve over oil breather line until end of insulation sleeve is  $0.5 \pm 0.5$  inch ( $1.27 \pm 1.27$  cm) from aft LH baffle.
- 2 Trim end of insulation sleeve length if excess interferes with installation of oil breather line to elbow fitting.
- 3 Verify no low points exist in oil breather line.

**DETAIL A**

**LEGEND**

- 1. Insulation Sleeve
- 2. Adel Clamp
- 3. Bolt
- 4. Washer
- 5. Nut

SR2\_SB71\_1084

**Figure 01 - Oil Breather Line Insulation Sleeve Installation**



# Service Loop

## Publications Change Request and Evaluation Form

Use this form to submit a Publications Change Request to our Engineering Department and/or to tell us what you think of the quality of this publication. We will use the data you provide us to improve the quality of our technical publications.

**Contact Information:**

Organization: \_\_\_\_\_  
 Address: \_\_\_\_\_  
 City/ST/Zip: \_\_\_\_\_  
 Prepared By: \_\_\_\_\_  
 Title: \_\_\_\_\_

Today's Date: \_\_\_\_\_  
 Telephone No.: \_\_\_\_\_  
 Fax No: \_\_\_\_\_  
 E-Mail: \_\_\_\_\_

**Publication Type:**

Airplane Model: \_\_\_\_\_

Publication Part Number: SB 2X-71-10 R1

Title of Publication: Oil Breather Line Insulation Sleeve Installation

Publication Date (See Cover Page): \_\_\_\_\_

**Location of Publication Change Request:**

Chapter Number: \_\_\_\_\_ Section Number: \_\_\_\_\_ Figure No (IPC or WM only): \_\_\_\_\_  
 Page Number: \_\_\_\_\_ Page Date: \_\_\_\_\_ Illustration Number (if applicable): \_\_\_\_\_

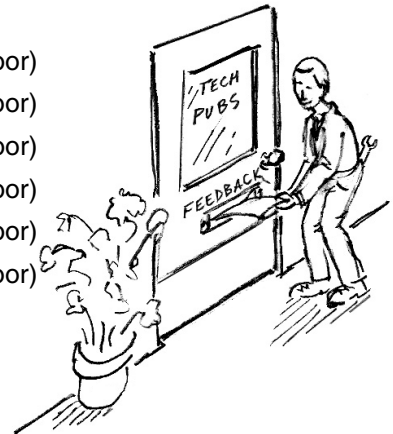
**Please consider the following suggestions for change:**

.....

**Evaluation:**

Please rate the quality of this publication.	(good)	4	3	2	1	(poor)
Please rate the quality of the illustrations.	(good)	4	3	2	1	(poor)
Is this publication easy to understand?	(good)	4	3	2	1	(poor)
Is this publication easy to use?	(good)	4	3	2	1	(poor)
Are the Material and Accomplishment Instructions accurate?	(good)	4	3	2	1	(poor)
Is the Manpower estimate accurate?	(good)	4	3	2	1	(poor)

**Fax or mail this form to Cirrus Design Corporation:**  
 Manager - Technical Publications, 4515 Taylor Circle, Duluth, MN 55811  
 PH (218) 727-2737  
 FAX: (218) 529-7301  
 www.cirrusdesign.com



Cirrus Design Corp  
4515 Taylor Circle  
Duluth, MN  
55811-1548

STAMP



CIRRUS DESIGN CORPORATION  
4515 TAYLOR CIRCLE  
DULUTH, MN  
55811-1548